

# GALAXY 700 XB

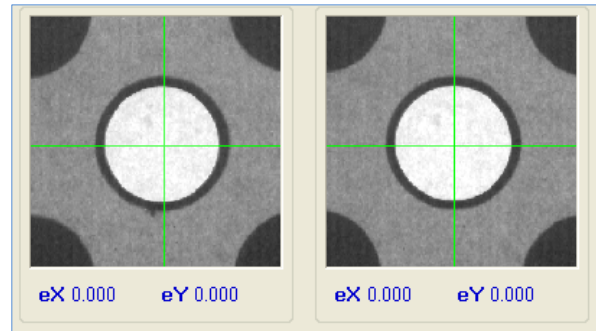
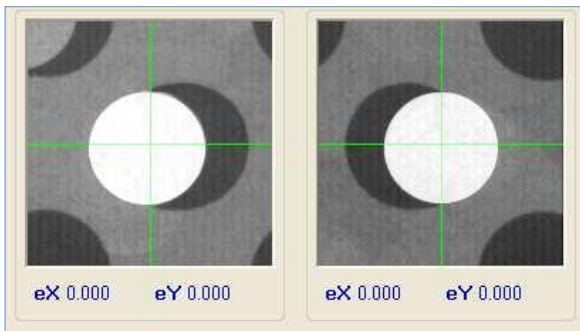
X-RAY PINS HOLES DRILLING, EDGE CUTTING-BEVELING AND CORNERS ROUNDING



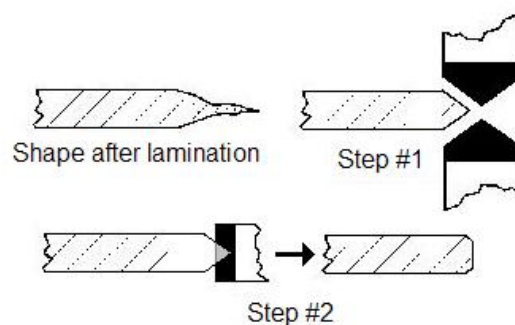
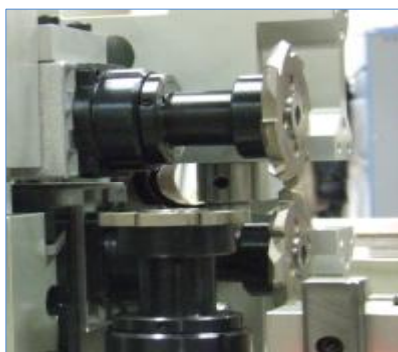
**Galaxy 700 XB line includes the following stations:**

- Drill reference holes (pin holes) on multi-layer panels.
- Copper Flash cutting and edge beveling
- Corners rounding
- Unloading on trolley

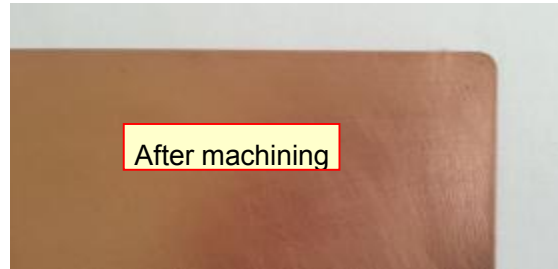
## X-RAY DRILLING



## EDGE CUTTING AND BEVELING



## 4 CORNERS ROUNDING



### OPTIONS:

- Automatic Loading station from trolley.
- Panel thickness measurement.
- Data Matrix Reading
- Micropunch panel ID
- Bar code reader
- Automatic tool change

### TECHNICAL SPECIFICATIONS:

<b>X-RAY station</b>		
Panel clamp	Venturi	Vacuum Area: 208 x 118 mm
Max target detection area	720 x 580 mm	
Max drilling area	740 x 580 mm	
Forbidden area	240 x 150 mm	Central vacuum plate
Max. Panel dimension	760 x 600 mm	
Min. Panel dimensions	300 x 200 mm	
Panel thickness	0,3 – 5 mm	
Max. panel weight	N.A.	
Max. flash width	25 mm	
Recommended target diam.	0,5 – 2,5 mm	
Drilling tool diameter	2 – 5 mm	
Process time	30 sec	4 targets + 3 holes – Including the panel load by operator
Electrical power	2 KVA	Voltages: 400 and 480 V – 3 Ph – No neutral
Air consumption	500 NL/min (Avg)	Peak con. 1500 NL/min – Min. Pressure: 6-10 Bar
<b>Cutting and Beveling stations</b>		
<b>Tools specifications</b>		
Cutters for edges	Diam. 80 mm	V profile disks - Refer to drawings
Cutters life time	8 – 10 Km	
Router for edges	Diam. 60 mm	Refer to drawings
Router for chamfering	Diam. 25 mm	V profile router - Refer to drawings
Dust evacuation	Vacuum cleaner	
Process Scraps deposit	Dedicated cart	
<b>Working capabilities</b>		
Max panel size	700 x 700 mm	After beveling
Min Panel size	305 x 305 mm	After beveling
Chamfering diameter	5 – 10 mm	
Panel thickness	0,5 – 4,8 mm	
Max flash width	25 mm	Over the beveling limits
Max flash thickness	≤ panel thickness	
Beveling tolerance	± 0,5 mm	
Max stack on output trolley	200 mm	Height of stack
Process time	60 sec.	Beveling + Chamfering + Automatic panel lay down
Electrical power	10 KVA (Max)	400 and 480 V – 3 Ph – No neutral – Included vacuum unit
Air consumption	100 NL/min	Average – Min. Pressure: 6-10 Bar